



# Essential Product Guide



Containers, pallets and allied products available from your LINPAC Allibert Authorised Distributor



October 2011

**Interactive Packaging Solutions Ltd.**  
Unit 3 Ash Road North,  
Wrexham Enterprise Park,  
Wrexham LL13 9JT.  
Tel : 01978 661671  
Fax : 01978 661681  
E-mail: [sales@ips-uk.co.uk](mailto:sales@ips-uk.co.uk)  
[www.ips-uk.co.uk](http://www.ips-uk.co.uk)

Stacking Containers

Stacking & Nesting

Wheeled Dollies

Bulk Containers

Pallets

# Stacking containers

## Your Authorised Distributor

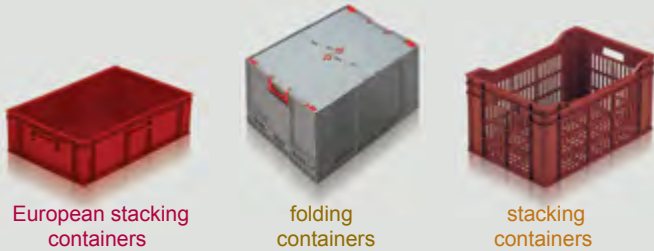
LINPAC Allibert introduced the Authorised Distributor programme to promote exceptional levels of customer service and support.

Expert in a number of industries, each Authorised Distributor has been selected to meet their customers' storage, handling and distribution needs with a wide range of LINPAC Allibert products. Authorised Distributors have the experience and know-how to recommend a materials handling solution to save you time, reduce costs and minimise packaging waste.

Authorised Distributor Customers enjoy many benefits including fast delivery, competitive prices and the ability to order products in smaller quantities than direct from the manufacturer.

## Stacking containers

Designed for a wide range of handling and storage applications, LINPAC Allibert stacking trays and containers are strong, durable and efficient. Containers securely stack, vertical sides provide maximum internal volume and smooth surfaces are hygienic and easy to clean.



European stacking containers

folding containers

stacking containers

### ● Euro stacking containers

Modular inter-stacking containers; 400x300mm containers stack 2-up (side by side) on 600x400mm models and 600x400mm containers stack 2-up on 800x600mm models. Accessories include lids (separate or attached), label holders, dividers and wheeled dollies.

### ● Folding containers

Fold flat for efficient return logistics

### ● Stacking containers

Vertical sides provide maximum internal volume.



### ES210004: 5 litres

Solid Euro stacking  
Ext: 300 x 200 x 118mm  
Int: 257 x 159 x 108mm  
Wt: 0.42 Kg  
Colour: grey or red

Stacks 2-up (side by side) on 400 x 300mm Euro stacking containers



### ES100604: 6 litres

Solid Euro stacking  
Ext: 400 x 300 x 74mm  
Int: 355 x 255 x 64mm  
Wt: 0.48 Kg  
Colour: grey

Stacks 2-up (side by side) on 600 x 400mm Euro stacking containers



### ES210104: 10 litres

Solid Euro stacking  
Ext: 400 x 300 x 118mm  
Int: 355 x 255 x 105mm  
Wt: 0.8 Kg  
Colour: grey or red



### ES431704: 15 litres

Solid Euro stacking  
Ext: 400 x 300 x 175mm  
Int: 354 x 254 x 162mm  
Wt: 1.1 Kg  
Colour: grey or red

### ES210001: 10 litres

Ventilated version of ES210104  
Wt: 0.66 Kg  
Colour: grey

### LI610204: Lid

Cover for 400x300 Euro stacking range  
Colour: grey or red



### ES432304: 20 litres

Solid Euro stacking  
Ext: 400 x 300 x 235mm  
Int: 354 x 254 x 222mm  
Wt: 1.4 Kg  
Colour: grey or red



### ES103004: 30 litres

Solid Euro stacking  
Ext: 400 x 300 x 319mm  
Int: 355 x 255 x 300mm  
Wt: 1.77 Kg  
Colour: grey

### ES102606: 20 litres

Solid base, ventilated sides  
version of ES432304  
Wt: 1.18 Kg, Colour: grey

# Stacking containers

600x400mm Euros are compatible with 600x400 wheeled dollies and stack 2-up (side by side) on 800x600mm Euros and the Universal dolly.



**ES100804: 8 litres**  
Solid Euro stacking  
Ext: 600 x 400 x 50mm  
Int: 555 x 355 x 40mm  
Wt: 0.8 Kg  
Colour: grey



**ES640701: 12 litres**  
Ventilated Euro stacking  
Ext: 600 x 400 x 75mm  
Int: 556 x 356 x 62mm  
Wt: 0.9 Kg  
Colour: grey



**ES641204: 21 litres**  
Solid Euro stacking  
Ext: 600 x 400 x 120mm  
Int: 556 x 356 x 107mm  
Wt: 1.5 Kg  
Colour: grey, red or white



**ES001611: 20 litres**  
Ventilated Euro stacking  
Ext: 600 x 400 x 120mm  
Int: 555 x 355 x 104mm  
Wt: 1.1 Kg  
Colour: grey

**ES640704: 12 litres**  
Solid version of ES640701  
Wt: 1.1 Kg  
Colour: grey

**ES641201: 21 litres**  
Ventilated version of ES641204  
Wt: 1.2 Kg  
Colour: grey



**ES200201: 28 litres**  
Ventilated Euro stacking  
Ext: 600 x 400 x 150mm  
Int: 555 x 355 x 139mm  
Wt: 1.25 Kg  
Colour: grey



**ES641704: 34 litres**  
Solid Euro stacking  
Ext: 600 x 400 x 175mm  
Int: 556 x 356 x 162mm  
Wt: 1.8 Kg  
Colour: grey or red



**ES2A0405: 45 litres**  
Solid Euro with cut-out handles  
Ext: 600 x 400 x 235mm  
Int: 555 x 355 x 220mm  
Wt: 2.14 Kg, colour: grey



**ES2A0401: 45 litres**  
Ventilated Euro stacking  
Ext: 600 x 400 x 235mm  
Int: 555 x 355 x 215mm  
Wt: 1.83 Kg  
Colour: grey

**ES200204: 28 litres**  
Solid version of ES200201  
Wt: 1.48 Kg  
Colour: grey

**ES641701: 34 litres**  
Ventilated Euro stacking  
Ext: 600 x 400 x 175mm  
Int: 556 x 356 x 162mm  
Wt: 1.4 Kg, Colour: grey

**LI104504: Snap-shut lid**  
**ES2A0404: 45 litres**  
As ES2A0405 with solid hand-holds  
Wt: 2.18 Kg, Colour: grey or red



**ES210504: 54 litres**  
Solid Euro stacking  
Ext: 600 x 400 x 280mm  
Int: 555 x 355 x 265mm  
Wt: 2.51 Kg, Colour: grey



**ES210605: 60 litres**  
Solid Euro stacking  
Ext: 600 x 400 x 319mm  
Int: 555 x 355 x 300mm  
Wt: 2.75 Kg, colour: grey or red



**ES210601: 60 litres**  
Ventilated Euro stacking  
Ext: 600 x 400 x 319mm  
Int: 555 x 355 x 294mm  
Wt: 2.33 Kg, Colour: grey



**ES644005: 75 litres**  
Solid Euro stacking  
Ext: 600 x 400 x 400mm  
Int: 556 x 356 x 387mm  
Wt: 3.1 Kg, Colour: grey

**ES105501: 52 litres**  
Ventilated Euro stacking  
Ext: 600 x 400 x 280mm  
Int: 555 x 355 x 255mm  
Wt: 2.18 Kg, Colour: grey

**LI106004: Lid**  
Cover for 600x400 Euros

**ES210604: 60 litres**  
As ES210605 with solid handles  
Wt: 2.88 Kg, colour: grey

**ES210606: 60 litres**  
Solid base ventilated sides  
version of above, Wt: 2.31 Kg,  
Colour: grey

**ES200806: 75 litres**  
Ventilated version of  
ES644005  
Wt: 3.06 Kg, Colour: grey

Range index

400 x 300 Euros

600 x 400 Euros

Other Euros

Stacking & folding

Wheeled dollies

# Stacking containers



**ES210905: 87 litres**

Solid Euro stacking  
Ext: 800 x 600 x 235mm  
Int: 755 x 555 x 205mm  
Wt: 3.85 Kg  
Colour: grey

**ES210901: 87 litres**

Ventilated version of ES210905  
Wt: 3.33 Kg, colour: grey



**ES211306: 125 litres**

Solid base, ventilated sides  
Euro stacking  
Ext: 800 x 600 x 319mm  
Int: 755 x 555 x 295mm  
Wt: 4.06 Kg  
Colour: grey



**ES157805: 125 litres**

Solid Euro stacking  
Ext: 800 x 600 x 319mm  
Int: 752 x 555 x 305mm  
Wt: 4.4 Kg  
Colour: grey

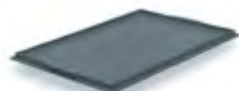


**ES211605: 162 litres**

Solid Euro stacking  
Ext: 800 x 600 x 412mm  
Int: 755 x 555 x 382mm  
Wt: 5.63 Kg, colour: grey

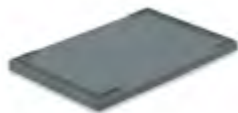
**LI108604: Snap-shut lid**

**ES211606: 162 litres**  
Solid base, ventilated sides  
version of ES211605  
Wt: 4.99 Kg, colour: grey



**Covers**

Euro stacking container covers  
Ref. LI610204: 400 x 300mm  
Colour: grey or red  
Ref. LI664404: 600 x 400mm  
Colour: grey or red  
Ref. LI108704: 800 x 600mm  
Colour: grey



**Snap shut lids**

Secure fitting lid for Euro  
stacking containers  
Ref. LI104504: 600 x 400mm  
Colour: grey  
Ref. LI108604: 800 x 600mm  
Colour: grey



**Divider strips**

Snap to size & interlock  
OT800404: 1,104 x 45mm  
OT800804: 1,104 x 88mm  
OT801504: 1,100 x 150mm  
OT801904: 1,100 x 190mm



**ES0C1004: 10 litres**

Solid Euro with integral lid  
Ext: 400 x 300 x 129mm  
Int: 355 x 255 x 105mm  
Wt: 1.21 Kg, colour: grey

**OTPE9004: Card clip**

Stainless steel card clip for Euro  
stackers

**ES1C2704: 15 litres**

Ext: 400 x 300 x 186mm  
Int: 355 x 255 x 164mm  
Wt: 1.43 Kg, colour: grey



**ES1C2004: 20 litres**

Solid Euro with integral lid  
Ext: 400 x 300 x 246mm  
Int: 355 x 255 x 220mm  
Wt: 1.68 Kg, colour: grey



**ES0C2804: 28 litres**

Solid Euro with integral lid  
Ext: 600 x 400 x 161mm  
Int: 555 x 355 x 139mm  
Wt: 2.11 Kg, colour: grey



**ES1C4504: 45 litres**

Solid Euro with integral lid  
Ext: 600 x 400 x 246mm  
Int: 555 x 355 x 220mm  
Wt: 3.0 Kg, colour: grey



**ES0C8505: 75 litres**

Solid Euro with integral lid  
Ext: 600 x 400 x 423mm  
Int: 555 x 355 x 394mm  
Wt: 4.47 Kg, colour: grey

**ES1C3004: 32 litres**

Ext: 400 x 300 x 330mm  
Int: 355 x 255 x 300mm  
Wt: 2.18 Kg, colour: grey

**ES1C3304: 28 litres**

Ext: 600 x 400 x 186mm  
Int: 555 x 355 x 164mm  
Wt: 2.48 Kg, colour: grey

**ES1C5404: 54 litres**

Ext: 600 x 400 x 291mm  
Int: 555 x 355 x 265mm  
Wt: 3.33 Kg, colour: grey

Range index

400 x 300 Euros

600 x 400 Euros

Other Euros

Stacking & folding

Wheeled dollies

# Stacking containers



**RB102801: 30 litres**

Ventilated crate  
Ext: 500 x 300 x 265mm  
Int: 465 x 265 x 250mm  
Wt: 1.32 Kg, colour: brown-red

**RB102928: 30 litres**

As RB102801 with drain holes  
in solid scalloped base  
Wt: 1.4 Kg, colour: brown-red



**SN290401: 50 litres**

Ventilated stacking container  
Ext: 550 x 366 x 295mm  
Int: 518 x 333 x 260mm  
Wt: 2.02 Kg, colour: brown-red



**RB410401: 43 litres**

Ventilated stacking container  
Ext: 750 x 450 x 165mm  
Int: 724 x 425 x 138mm  
Wt: 1.68 Kg, colour: white



**RB155004: 28 litres**

Solid stacking container for  
hygienic food handling  
Ext: 654 x 395 x 155mm  
Int: 585 x 325 x 139mm  
Wt: 1.9 Kg, colour: natural



**RB318304: 22 litres**

Solid 30"x18" confectionery tray  
Ext: 762 x 457 x 92mm  
Int: 715 x 412 x 72mm  
Wt: 1.8 Kg, colour: natural  
Compatible with lid ref. LI301804  
and dolly ref. DO301801



**RB318301: 22 litres**

Ventilated 30"x18" confectionery  
tray  
Ext: 762 x 457 x 92mm  
Int: 715 x 412 x 72mm  
Wt: 1.4 Kg, colour: natural  
Compatible with lid ref. LI301804  
and dolly ref. DO301801



**RB318306: 22 litres**

Ventilated sides, solid base  
30"x18" confectionery tray  
Ext: 762 x 457 x 92mm  
Int: 715 x 412 x 72mm  
Wt: 1.7 Kg, colour: natural  
Compatible with lid ref. LI301804  
and dolly ref. DO301801



**RB318504: 32 litres**

Solid 30"x18" confectionery tray  
Ext: 762 x 457 x 123mm  
Int: 715 x 412 x 103mm  
Wt: 2.2 Kg, colour: natural

**RB318501: 32 litres**

Ventilated version of RB318504  
Wt: 1.8 Kg, colour: natural



**RB318704: 48 litres**

Solid 30"x18" confectionery tray  
Ext: 762 x 457 x 176mm  
Int: 715 x 412 x 156mm  
Wt: 2.6 Kg, colour: natural



**RB318701: 48 litres**

Ventilated 30"x18" confectionery  
tray  
Ext: 762 x 457 x 176mm  
Int: 715 x 412 x 156mm  
Wt: 2.1 Kg, colour: natural



**FC465004: 178 litres**

Galia folding container  
Ext: 800 x 600 x 465mm  
Int: 760 x 560 x 420mm  
Wt: 7.4 Kg, colour: grey

**LI301804 Lid**

Confectionery tray lid  
Colour: grey

**RB318706: 48 litres**

Ventilated sides solid base  
version of RB318701  
Wt: 2.5 Kg, colour: natural

# Stacking & nesting containers

LINPAC Allibert stack nest trays and containers are tough, long lasting and cost effective. Often referred to as Returnable Transit Packaging (RTP), stack nest containers are ideal for all distribution applications.

Containers securely stack for efficient distribution and nest to save return transport costs.

Unlike disposable packaging all our products can be used again and again, over many years, helping our customers comply with packaging waste regulations, reduce carbon footprint and save money.



attached lid containers



180° stack nest



bale arm containers



bread baskets

## ● Attached lid containers (ALCs)

Incorporating an integral hinged lid, ALCs (Attached Lid Containers) provide the secure distribution solution.

Containers stack with lids closed and nest with lids open. Push-in tamper evident security seal system ensures that seals cannot be removed without breakage – providing visual identification of whether a container has been opened.

## ● 180° stacking & nesting containers

180° stacking & nesting containers stack when loaded and nest when empty by turning through 180° – saving up to 70% when empty.

Bi-colour containers clearly identify stacking and nesting positions to prevent accidentally crushing the contents by stacking in the wrong orientation.

## ● Maxinest bale arm stacking & nesting containers

The market leading produce tray for retail grocery logistics and point of-sale display. Maxinest trays inter-stack with each other for the safe distribution of fruit & vegetables, prepackage meats, fish and ready meals. Containers nest saving up to 76% of their original height, for the return journey through the supply chain.

Dual height Maxinests provide two or three working heights. This enables containers only to be part filled, for example with delicate produce which would be crushed if filled to the maximum loaded height. The alternative stacked height allows efficient distribution and means the same tray can be used for a number of different applications.

## ● Wheeled dollies

Ease and speed container handling operations.



**AT432204: 18 litres**  
Attached lid container  
Ext: 400 x 300 x 222mm  
Int: 338 x 254 x 197mm  
51% height saving when nested  
Wt: 1.8 Kg  
Colour: blue

Tamper-evident security seals available.



**AT432604: 22 litres**  
Attached lid container  
Ext: 400 x 300 x 264mm  
Int: 334 x 254 x 239mm  
59% height saving when nested  
Wt: 1.9 Kg  
Colour: blue

Tamper-evident security seals available.



**AT433104: 25 litres**  
Attached lid container  
Ext: 400 x 300 x 306mm  
Int: 329 x 250 x 282mm  
64% height saving when nested  
Wt: 2.1 Kg  
Colour: blue

Tamper-evident security seals available.



**AT642604: 48 litres**  
Attached lid container  
Ext: 600 x 400 x 264mm  
Int: 530 x 353 x 240mm  
75% height saving when nested  
Wt: 3 Kg, colour: blue

Compatible with 600x400 dollies, stacks 2-up (side by side) on Universal dolly.

Tamper-evident security seals available.



**AT643104: 54 litres**  
Attached lid container  
Ext: 600 x 400 x 306mm  
Int: 514 x 350 x 281mm  
64% height saving when nested  
Wt: 3.2 Kg, colour: blue

Compatible with 600x400 dollies, stacks 2-up (side by side) on Universal dolly.

Tamper-evident security seals available.



**AT643604: 65 litres**  
Attached lid container  
Ext: 600 x 400 x 365mm  
Int: 508 x 346 x 340mm  
70% height saving when nested  
Wt: 3.5 Kg, colour: blue

Compatible with 600x400 dollies, stacks 2-up (side by side) on Universal dolly.

Tamper-evident security seals available.

# Stacking & nesting containers



**AT644004: 70 litres**  
Attached lid container  
Ext: 600 x 400 x 400mm  
Int: 521 x 343 x 375mm  
73% height saving when nested  
Wt: 3.7 Kg  
Colour: blue

Compatible with 600x400 dollies, stacks 2-up (side by side) on Universal dolly.

Tamper-evident security seals available.



**AT10A829: 80 litres**  
ALC with 4 drain holes  
Ext: 710 x 460 x 368mm  
Int: 597 x 374 x 330mm  
78% height saving when nested  
Wt: 4.0 Kg  
Colour: green/green

**AT10A804: 80 litres**  
As AT10A829 without drain holes

Compatible with dolly DO684301. Tamper-evident security seals available.



**AT334904: 122 litres**  
Ext: 735 x 575 x 472mm  
Int: 560 x 470 x 400mm  
80% height saving when nested  
Wt: 6.5 Kg  
Colour: red



**AT336104: 165 litres**  
Ext: 735 x 575 x 623mm  
Int: 540 x 450 x 560mm  
85% height saving when nested  
Wt: 7.9 Kg, Colour: red



**AT337104: 126 litres**  
Ext: 1150 x 480 x 365mm  
Int: 980 x 370 x 310mm  
76% height saving when nested  
Wt: 7.0 Kg, Colour: red



**AT055209: 54 litres**  
Distribution picking container with sliding door and multi-fold lid  
Ext: 600 x 400 x 320mm  
Int: 505 x 334 x 292mm  
66% height saving when nested  
Wt: 3.2 Kg, colour: green/green

Compatible with 600x400 dollies, stacks 2-up (side by side) on Universal dolly.

Tamper-evident security seals available.



**OTKS0104: Security Seal**  
Tamper-evident security seal for all attached lid containers. Two seals required per container.

Range index

Kaiman ALCs

Other ALCs

Maxineest bale arm

180° stack nest

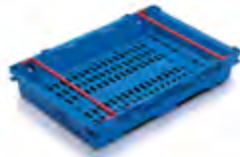
Wheeled Dollies

# Stacking & nesting containers

**MAXInest** 



**SN431802: 15 litres**  
Vented **MaxInest**® stacking & nesting with swing bar. Stacks 2-up (side by side) on 600x400mm MaxInest trays.  
Ext: 400 x 300 x 180mm  
Int: 364 x 264 x 144mm  
70% height saving when nested  
Wt: 1.0 Kg, colour: blue



**DH641002: 16 & 10 litres**  
Vented dual height **MaxInest**® with two working heights  
Ext: 600 x 400 x 106mm  
Int: 552 x 352 x 50mm  
50% & 60% saving when nested  
Wt: 1.2 Kg  
Colour: blue



**DH641602: 26 & 21 litres**  
Vented dual height **MaxInest**® with two working heights  
Ext: 600 x 400 x 167mm  
Int: 552 x 352 x 110mm  
34% & 76% saving when nested  
Wt: 1.5 Kg  
Colour: blue



**SN641902: 35 litres**  
Vented **MaxInest**® stacking & nesting with swing bar  
Ext: 600 x 400 x 199mm  
Int: 546 x 349 x 172mm  
76% height saving when nested  
Wt: 1.7 Kg  
Colour: blue, green or red



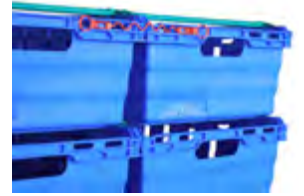
**SN641907: 35 litres**  
Solid **MaxInest**® stacking & nesting with swing bar  
Ext: 600 x 400 x 199mm  
Int: 546 x 349 x 172mm  
70% height saving when nested  
Wt: 1.8 Kg, colour: blue



**SN642402: 44 litres**  
Vented **MaxInest**® stacking & nesting with swing bar  
Ext: 600 x 400 x 253mm  
Int: 548 x 352 x 226mm  
74% height saving when nested  
Wt: 2.0 Kg, colour: blue



**SN642602: 46 litres**  
Vented **MaxInest**® stacking & nesting with swing bar  
Ext: 600 x 400 x 267mm  
Int: 548 x 352 x 240mm  
74% height saving when nested  
Wt: 2.1 Kg, colour: blue



**OT286304: MaxInest clip**  
Secures stacks of **MaxInest**® trays together during distribution on pallets or manual handling on wheeled dollies.

MaxInest trays inter-stack with each other and are compatible with 600x400mm dollies, stacking 2-up (side by side) on the Universal dolly DO795904.



**SN642202: 38 litres**  
Vented stacking & nesting with swing bar  
Ext: 600 x 400 x 225mm  
Int: 525 x 347 x 200mm  
60% height saving when nested  
Wt: 1.7 Kg  
Colour: blue

Compatible with 600x400mm dollies, stacks 2-up (side by side) on Universal dolly ref. DO795904.



**DH740002: 43 & 28 litres**  
Vented dual height stacking & nesting with swing bar  
Ext: 691 x 441 x 194mm  
Int: 635 x 391 x 168mm  
43% & 64% height saving when nested  
Wt: 2 Kg  
Colour: blue

Compatible with dolly ref. DO684301.



**DH701807: 54 litres**  
Solid stacking & nesting with swing bar  
Ext: 600 x 400 x 302mm  
Int: 570 x 370 x 270mm  
72% height saving when nested  
Wt: 2.4 Kg  
Colour: blue

Compatible with 600x400mm dollies, stacks 2-up (side by side) on the Universal dolly.



**DH701802: 54 litres**  
Vented stacking & nesting with swing bar  
Ext: 600 x 400 x 302mm  
Int: 570 x 370 x 270mm  
72% height saving when nested  
Wt: 2.1 Kg  
Colour: blue

Compatible with 600x400mm dollies, stacks 2-up (side by side) on the Universal dolly.

# Stacking & nesting containers

Range index

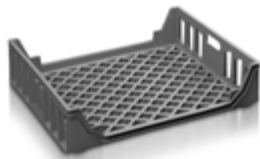
Kaiman ALCs

Other ALCs

Maxineest bale arm

180° stack nest

Wheeled Dollies



**SN151501: 63 litres**

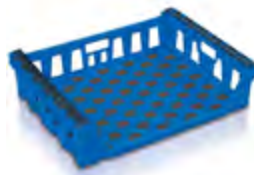
15 loaf bread basket, cross-nests by turning through 90°  
Ext: 772 x 627 x 176mm  
Int: 716 x 586 x 149mm  
50% height saving when nested  
Wt: 2.1 Kg  
Colour: grey



**SN121202: 65 litres**

12 loaf stack nest bread basket with swing bar and open front  
Ext: 762 x 508 x 216mm  
Int: 697 x 463 x 190mm  
50% height saving when nested  
Wt: 1.9 Kg  
Colour: grey

Compatible with dolly  
DO302001 (made to order item)



**SN150201: 68 litres**

15 loaf stack nest bread basket with swing bar and open front  
Ext: 788 x 617 x 190mm  
Int: 723 x 569 x 165mm  
50% height saving when nested  
Wt: 2.4 Kg  
Colour: blue

Compatible with dolly  
DO322601 (made to order item)



**SN101804: 18 litres**

Solid 180° Trad stack nest  
Ext: 600 x 400 x 117mm  
Int: 458 x 338 x 102mm  
70% height saving when nested  
Wt: 1.18 Kg, Colour: grey/grey

All 180° Trad containers inter-stack and inter-nest and are compatible with 600x400 dollies, stacking 2-up (side by side) on the Universal dolly..



**SN102001: 18 litres**

Ventilated 180° Trad stack nest  
Ext: 600 x 400 x 117mm  
Int: 458 x 338 x 102mm  
70% height saving when nested  
Wt: 1.09 Kg, Colour: grey

**LI104604: Snap-shut lid**

Lid for 180° Trad range and NO105104



**SN110305: 32 litres**

Solid 180° Trad stack nest  
Ext: 600 x 400 x 200mm  
Int: 457 x 338 x 177mm  
70% height saving when nested  
Wt: 1.84 Kg  
Colour: red/grey or grey/grey

**SN110301: 32 litres**

Ventilated version of SN110305  
Wt: 1.6 Kg, Colour: grey/grey



**SN105105: 50 litres**

Solid 180° Trad stack nest  
Ext: 600 x 400 x 300mm  
Int: 460 x 340 x 270mm  
70% height saving when nested  
Wt: 2.3 Kg  
Colour: red/grey or grey/grey

**SN105201: 50 litres**

Ventilated version of SN105105  
Wt: 2.1 Kg, colour: grey/grey



**SN106601: 70 litres**

Ventilated 180° Trad stack nest  
Ext: 600 x 400 x 400mm  
Int: 460 x 340 x 370mm  
70% height saving when nested  
Wt: 2.65 Kg, Colour: grey

**SN106505: 70 litres**

Solid version of SN106601  
Wt: 3.06 Kg, Colour: grey/grey



**SNE34204: 36 litres**

Solid 180° stacking & nesting  
Ext: 600 x 400 x 200mm  
Int: 547 x 345 x 186mm  
50% height saving when nested  
Wt: 2.03 Kg, Colour: grey/red

Compatible with 600x400 dollies, stacks 2-up (side by side) on Universal dolly.



**SN104405: 44 litres**

Solid 180° stacking & nesting  
Ext: 755 x 435 x 190mm  
Int: 680 x 360 x 170mm  
70% height saving when nested  
Wt: 2.25 Kg  
Colour: red



**NO105104: 55 litres**

Nesting (stacks only with lid fitted)  
Ext: 600 x 400 x 300mm  
Int: 526 x 332 x 295mm  
71% height saving when nested  
Wt: 2.33 Kg  
Colour: red

**LI104604: Snap-shut lid**

Lid for NO105104

# Wheeled dollies



**600x400 Dolly DOJ90501**  
600 x 400mm wheeled dolly with 4 swivel 100mmØ nylon castors  
Dim: 604 x 402 x 173mm  
Max loading: 180 Kg  
Wt: 4 Kg, Colour red

Carries 600x400mm Euro stacking, ALC, Maxinest and 180° stack nest ranges .



**600x400 Dolly DO484901**  
600 x 400mm linkable dolly with 4 swivel 100mmØ rubber castors  
Dim: 600 x 400 x 193mm  
Max loading: 250 Kg  
Wt: 4.2 Kg, Colour: grey

Carries 600x400mm Euro stacking, ALC, Maxinest and 180° stack nest ranges



**600x400 Dolly DO701501**  
600 x 400mm linkable dolly with 4 swivel 100mmØ nylon castors  
Dim: 604 x 454 x 195mm  
Max loading: 250 Kg  
Wt: 6.15 Kg, Colour: grey

Carries full Maxinest range and refs. DH701807 & DH701802

UNIVERSAL  
**DOLLY**



**Universal Dolly DO795904**  
800 x 600mm dolly with 4 swivel 100mmØ braked castors  
Dim: 798 x 598 x 171mm  
Max loading: 500 Kg  
Wt: 9.7 Kg, Colour grey

Carries two stacks of 600x400mm Euro stacking, ALC, Maxinest or 180° stack nest containers.

**Dolly handle HO008604**  
Fits Universal dolly



**Imperial Dolly DO684301**  
Dolly with 4 swivel 100mmØ nylon castors for imperial size containers.  
Dim: 680 x 436 x 200mm  
Max loading: 180 Kg  
Colour: grey

Carries large 710x460mm ALC refs. AT10A829 & AT10A804 and bale-arm stack nest container DH740002.

Range index

Euro Stacking

Stacking & Folding

ALCs

Stack nest

Wheeled Dollies

# Bulk containers & pallets

Products for bulk, heavy-duty and hygienic storage and distribution.

Bulk containers meet a wide range of handling requirements, including caps & closures, clothing & textiles, fresh fish, frozen meat, granules, metal components & fixings, plastic mouldings, vegetable harvesting, wiring looms, etc.

Plastic pallets provide the ideal solution for hygiene critical applications. Light weight pallets save fuel costs during distribution. Heavy duty models safely rack loads of up to 1.2 tonnes.



folding bulk containers



rigid bulk containers



pallets

## ● Maxipac folding containers

Ideal for a wide range of handling, distribution and point-of-sale applications. Maxipac folds flat when empty, drop-doors provide easy access, available with wheeled or pallet base.

## ● Folding large containers (FLCs)

Stacks up to five high carrying a unit load of 500Kg - a combined load of 2.5 tonnes. FLCs fold flat when empty, saving valuable space on return transport. Easy and quick to assemble and fold, drop-doors allow easy access - even when stacked. TYTAN is lighter, folds flatter and has a larger volume than any other container in its class.

## ● Geobox & Jumbox rigid bulk containers

Light and strong, Geoboxes stack up to ten high loaded to 450Kg each - a total load of 4.5 tonnes. Heavy duty Jumbox stacks ten high carrying a 650Kg unit load - a combined load of 6.5 tonnes.

## ● Universal pallet

The 800x600mm half size pallet is ideal for applications where space is limited, such as retail distribution and point-of-sale display or JIT deliveries to assembly plants.

## ● Packpal pallets

The light weight distribution pallet, Packpal with 9 feet nests when empty saving return transport costs.

## ● Maestro pallets

The ultimate plastic pallet, Maestro is strong, durable and extremely hygienic. The standard pallet can rack loads of up to 1.2 tonnes (reinforced versions rack up to 1.6 tonnes). Smooth surfaces, free from dirt traps, are easy to clean.



**GEObOX**



## GB725004: 250 litres

Solid Geobox with 2 runners.  
Ext: 1000 x 600 x 662mm  
Int: 929 x 544 x 519mm  
Unit load: 200 Kg x 10 high  
Wt: 13.5 Kg, colour: brown-red



## GB760101: 543 litres

Ventilated Geobox with 2 runners  
Ext: 1200 x 1000 x 750mm  
Int: 1110 x 910 x 545mm  
Unit load: 450 Kg x 10 high  
Wt: 33 Kg, colour: brown-red

Compatible with lid ref. LIC40104

## GB760004: 543 litres

Solid Geobox with 2 runners, Wt: 34 Kg

## GB760204: 543 litres

Solid Geobox with 6 feet, Wt: 33 Kg



## JU162604: 650 litres

Solid Jumbox with 3 integral runners that allow tipping. Smooth hygienic design  
Ext: 1200 x 1000 x 765mm  
Int: 1135 x 935 x 600mm  
Unit load: 650 Kg x 10 high  
Wt: 46.4 Kg, Colour: white

## LIE65104: Lid

Lid for JU162604  
Colour: brown-red

# Bulk containers & pallets

**MAXipac**



**BD702692: 357 litres**  
 Maxipac folding bulk container  
 Ext: 800 x 600 x 1000mm  
 Int: 756 x 556 x 846mm  
 68% height saving when folded  
 Loading: 250 Kg on base unit  
 Wt: 22 Kg, colour: black



**BD702792: 357 litres**  
 Maxipac with wheeled castors  
 Ext. 800 x 600 x 1080mm  
 Int.: 756 x 556 x 843mm  
 61% height saving when folded  
 Loading: 250 Kg on base unit  
 Wt: 25.5 Kg, colour: black

**tytan**



**FLA97520: 800 litres**  
 TYTAN heavy duty folding bulk container  
 with 3 runners & 2 drop doors  
 Ext: 1200 x 1000 x 975mm  
 Int: 1121 x 921 x 775mm  
 62% height saving when folded  
 Unit load: 500 Kg x 5 high  
 Wt: 48 Kg, colour: black  
 Compatible with lid ref. LI09759D



**FL097520: 780 litres**  
 K975 heavy duty folding bulk container with  
 3 runners & 2 drop doors  
 Ext: 1200 x 1000 x 975mm  
 Int: 1118 x 918 x 760mm  
 62% height saving when folded  
 Unit load: 500 Kg x 5 high  
 Wt: 63.9 Kg, colour: black  
 Compatible with lid ref. LI09759D

**Crescendo**



**CR780605: 560 litres**  
 Crescendo folding bulk container with  
 3 runners and smooth hygienic design  
 Ext: 1200 x 1000 x 750mm  
 Int: 1115 x 915 x 550mm  
 Folded height: 398mm  
 Unit load: 500 Kg x 5 high  
 Wt: 40.7 Kg, colour: light-grey/grey

**Boxerpac**



**BP12081K: 600 litres**  
 Boxerpac (pallet base, lid &  
 folding plastic sleeve) with 9  
 feet & one drop-door  
 Ext: 1200 x 800 x 910mm  
 Folded height: 272mm  
 Unit load: 500 Kg x 3 high  
 Wt: 28 Kg, colour: grey

**BP12088H: 600 litres**  
 As BP12081K with 3 runners



**BP12101K: 984 litres**  
 Boxerpac (pallet base, lid &  
 folding plastic sleeve) with 9  
 feet & one drop-door  
 Ext: 1200 x 1000 x 1100mm  
 Folded height: 272mm  
 Unit load: 500 Kg x 3 high  
 Wt: 30 Kg, colour: black/grey

**BP12108H: 984 litres**  
 As BP12081K with 3 runners

Range index

Stacking Containers

Stacking & Nesting

Rigid bulk boxes

Folding bulk boxes

Pallets

# Bulk containers & pallets

UNIVERSAL  
PALLET



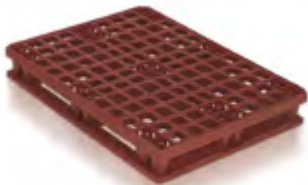
**PA262804: 800x600mm**  
 Universal pallet with 3 runners  
 & load retaining pop-ups  
 Dim: 800 x 600 x 165mm  
 Mobile load: 500 Kg  
 Static load: 1000 Kg  
 Racked load: n/a  
 Wt: 7 Kg  
 Colour: black



**PKF00301: 1200x1000mm**  
 Packpal pallet with 9 feet  
 (nests when empty), open deck  
 and load retaining lip  
 Dim: 1200 x 1000 x 147mm  
 Mobile load: 650 Kg  
 Static load: 1500 Kg  
 Not suitable for pallet racking  
 Wt: 7.3 Kg, colour: brown-red



**PKF30301: 1200x1000mm**  
 Packpal pallet with 3 runners,  
 open deck & load retaining lip.  
 Dim: 1200 x 1000 x 172mm  
 Mobile load: 650 Kg  
 Static load: 1500 Kg  
 Not suitable for pallet racking  
 Wt: 9.3 Kg, Colour: brown-red,



**PKF50301: 1200x1000mm**  
 Packpal pallet with perimeter runners, open  
 deck & load retaining lip.  
 Dim: 1200 x 1000 x 172mm  
 Mobile load: 1200 Kg  
 Static load: 1500 Kg  
 Racked load: 700 Kg  
 Wt: 11.9 Kg, colour: brown-red

MAESTRO



**MAM30204: 1200x1000mm**  
 Maestro pallet with 3 runners & solid  
 smooth deck with 7mm load retaining lip  
 Dim: 1200 x 1000 x 165mm  
 Mobile load: 1500 Kg  
 Static load: 5000 Kg  
 Racked load: 1200 Kg  
 Wt: 23.5 Kg, colour: blue

**MAM30004: 1200x1000mm**  
 As MAM30204 without 7mm lip



**CO101501: Pallet collar**  
 Transforms a standard 1200x1000 plastic  
 or wood pallet into a robust bulk container.  
 Seven folded collars fit into one assembled  
 unit, saving valuable transport space on the  
 return journey.  
 Ext: 1225 x 1025 x 352mm  
 Int: 1160 x 960 x 300mm  
 Folded: 1150 x 130 x 352mm  
 Load: 500 Kg (up to 4 collars high)  
 Wt: 6.2 Kg, colour: black

Range index

Stacking Containers

Stacking & Nesting

Rigid bulk boxes

Folding bulk boxes

Pallets

